

# Sofa & Loveseat



## Beckridge Shadow

Model 31706 • Sofa & Loveseat

Beckridge

**\$450 (Sofa)**

A bleach-cleanable Nuvella chenille sofa with a velvet look and Ultra Plush t-cushions at \$450. It is the easiest close in the room.

SLEEPER AVAILABLE

BENCHCRAFT

NUVELLA

ULTRA PLUSH

### ASSOCIATED ACCENTS



#### Bannette

Model T605

**\$220 (Cocktail)**



#### Capwich

Model L100994

**\$55**



#### Jessmen

Model R40875

**\$100**



# ChloeAnne Honey

Model 25505 • Sofa & Loveseat

ChloeAnne

**\$420 (Sofa)**

Feather Blend cushions in a linen-weave fabric with the shaped arm from the 849 sectional, at \$420 for the sofa this is genuinely hard to beat.

**BENCHCRAFT**

**MILLENNIUM**

**FEATHER BLEND**

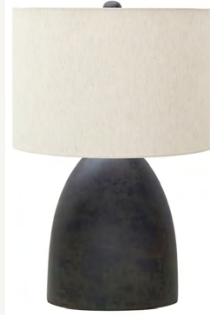
## ASSOCIATED ACCENTS



### **Bannette**

Model T605

**\$220 (Cocktail)**



### **Sethmore**

Model L101024

**\$80**



### **Kasidon**

Model R40860

**\$50**



## Hutle Grove

Model 85604 • Sofa & Loveseat

Hutle

**\$320 (Sofa)**

A deep forest green water-resistant faux leather sofa with jumbo stitch and a track arm for \$320. Its photographs like real leather and the color alone closes rooms.

NUVALUXE

### ASSOCIATED ACCENTS



#### Caplow

Model A4000750

**\$110**



#### Lemland

Model L208534

**\$90**



#### Yellink

Model R40880

**\$100**



# Lockeshart Opal

Model 26005 • Sofa & Loveseat

Lockeshart

**\$370 (Sofa)**

Feather Blend in both the seat AND the back at \$370 for the sofa. That is the combo that is supposed to cost more.

SLEEPER AVAILABLE

MILLENNIUM

FEATHER BLEND

## ASSOCIATED ACCENTS



### Budington

Model A4000751

**\$110**



### Webbington

Model L100944

**\$55**



### Maribel

Model R40868

**\$100**



# Whitmore Estate Hickory

Model 11612 • Sofa & Loveseat

Whitmore Estate

**\$800 (Sofa)**

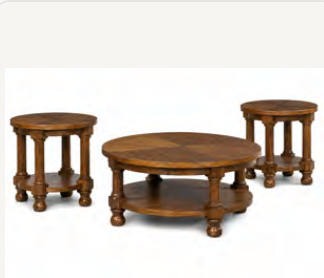
Waxy semi-aniline leather with a new-vintage grain, rolled arms, bun feet, and feather blend cushions. It looks like it has been in a great room for twenty years and costs like it was just made.

SLEEPER AVAILABLE

MILLENNIUM

FEATHER BLEND

## ASSOCIATED ACCENTS



### Britton Bay

Model T614

**\$280 (Cocktail)**



### Junrow

Model L430964

**\$200**



### Carddon

Model R40884

**\$100**



## Artisian Loft Pewter

Model 20804 • Sectionals

Artisian Loft

**\$520**

A Next-Gen Nuvela sectional that is bleachable and UV-protected at \$520 for two pieces. That is a high-traffic family room solved for under six hundred dollars.

SLEEPER AVAILABLE

NEXT-GEN NUVELLA

ULTRA PLUSH

### ASSOCIATED ACCENTS



#### Crendlin

Model T537

**\$220 (Cocktail)**



#### Weswick

Model L100934

**\$60**



#### Candel

Model R40869

**\$100**



# Ellicton Pike Smolder

Model 64106 • Sectionals

## Ellicton Pike

**\$850**

A 49" deep contemporary sectional with a fully upholstered 12" wrap arm that starts as one clean SKU and grows. At \$850 for two pieces, it is one of the sharper deals on the floor.

**ULTRA PLUSH**

### ASSOCIATED ACCENTS



#### **Weathermore**

Model T531

**\$220 (Cocktail)**



#### **Bronnerdale**

Model L236134

**\$65**



#### **Derstinton**

Model R40867

**\$85**



# Linenhouse Dune

Model 31803 • Sectionals

Linenhouse

**\$1,450**

A 43" deep chenille velvet modular that comes with the swivel chair built into the package, it is a full living room in one SKU family.

ULTRA PLUSH

FEATHER BLEND

## ASSOCIATED ACCENTS



### Crendlin

Model T537

**\$220 (Cocktail)**



### Gilmerland

Model A3000836

**\$180**



### Wainmoore

Model R40874

**\$100**



# MaKaylen

Model 69505/6/7 • Sectionals

## \$500 (2 PC Sectional)

A clean contemporary 2 piece sectional at \$500, with sleeper and recliner options in the same family when you need more flexibility.

SLEEPER AVAILABLE

### ASSOCIATED ACCENTS



**Bethanstone**  
Model A3000846  
**\$220**



**L236144**  
Model L236144  
**\$50**



**Gubbins**  
Model A3000852  
**\$260**





# Mandi Point Marble

Model 62606 • Sectionals

## Mandi Point

**\$1,100**

A 43" deep chenille sectional with stacked pillows and a \$1,100 entry point, that is a lot of sofa for the money.

**SLEEPER AVAILABLE**

### ASSOCIATED ACCENTS



#### Rustic Plains

Model T877

**\$350 (Cocktail)**



#### Dellridge

Model L400004

**\$180**



#### Wilham

Model R40864

**\$100**



## Reston Cove Burlap

Model 68008 • Sectionals

Reston Cove

**\$2,000**

48" deep with feather blend cushions top and bottom, this is the one you sit in and immediately stop caring about anything else.

MILLENNIUM

FEATHER BLEND

### ASSOCIATED ACCENTS



#### Wardington

Model A3000843

**\$300**



#### Varnburg

Model A1001182

**\$35**



#### Brickmoore

Model A2000919

**\$35**



# Rosston Espresso

Model 86205 • Sectionals

Rosston

**\$1,000**

A deep espresso chenille sectional with a flexible configuration story: build it as two pieces or three depending on the room. \$1,000 for three pieces is hard to argue with.

**ULTRA PLUSH**

## ASSOCIATED ACCENTS



### Britton Bay

Model T614

**\$280 (Cocktail)**



### Dorriham

Model L208554

**\$90**



### Shasur

Model R40859

**\$50**

APRIL 2026 HIGH POINT MARKET INTRODUCTIONS

# Toliar Feathered

Model 68706 • Sectionals

## \$1,250

A fully modular 40" deep sectional that floats anywhere in the room without connectors, and it feels as good as it looks.

**ULTRA PLUSH**

### KEY FEATURES

- Contemporary 40" depth modular design meets transitional styling
- Modular with all sides finished, no connectors so each piece can float anywhere
- Loose reversible knife-edge backs
- Decorative thick cozy jacquard toss pillows included
- Non-skid legs



### ASSOCIATED ACCENTS



#### Rustic Plains

Model T877  
\$350 (Cocktail)



#### Callbrook

Model L243714  
\$65



#### Kasidon

Model R40860  
\$50

## Accent Seating



### Dettaford Next-Gen

Model A3000848 • Accent Seating

**\$170**

#### KEY FEATURES

- Upholstered in stone polyester fabric
- Wood trim in light brown and black finished metal legs
- Hinged seat with storage



### Dishford

Model A3000839 • Accent Seating

**\$190**

#### KEY FEATURES

- Upholstered in storm polyester fabric
- Loose back and seat cushions
- Swivel base



### Dishford

Model A3000840 • Accent Seating

**\$190**

#### KEY FEATURES

- Upholstered in evergreen polyester fabric
- Loose back and seat cushions
- Swivel base



### Dishford

Model A3000841 • Accent Seating

**\$190**

#### KEY FEATURES

- Upholstered in cinnamon polyester fabric
- Loose back and seat cushions
- Swivel base

## Accent Seating



### Gilmerland

Model A3000835 • Accent Seating

**\$140**

#### KEY FEATURES

- Upholstered in rust polyester fabric
- Reversible back cushion and tight seat
- Wood legs in brown finish



### Gilmerland

Model A3000836 • Accent Seating

**\$140**

#### KEY FEATURES

- Upholstered in olive green polyester fabric
- Reversible back cushion and tight seat
- Wood legs in brown finish



### Gilmerland

Model A3000837 • Accent Seating

**\$140**

#### KEY FEATURES

- Upholstered in navy polyester fabric
- Reversible back cushion and tight seat
- Wood legs in brown finish



### Gregorley

Model A3000832 • Accent Seating

**\$150**

#### KEY FEATURES

- Upholstered in polyester fabric in merlot
- Barrel back and tight seat
- Swivel base

## Accent Seating



### Gregorley

Model A3000833 • Accent Seating

**\$150**

#### KEY FEATURES

- Upholstered in polyester fabric in butterscotch
- Barrel back and tight seat
- Swivel base



### Gregorley

Model A3000834 • Accent Seating

**\$150**

#### KEY FEATURES

- Upholstered in polyester fabric in mocha
- Barrel back and tight seat
- Swivel base



### Gubbins

Model A3000852 • Accent Seating

**\$260**

#### KEY FEATURES

- Upholstered in blue, green and pale yellow botanical pattern polyester fabric
- Reversible pillow back and loose seat cushion
- Swivel base



### Horlando

Model A3000842 • Accent Seating

**\$180**

#### KEY FEATURES

- Upholstered in light blue polyester fabric
- Tight back and loose seat cushion
- Rolled arm
- Metal swivel base

## Accent Seating



### Jeanwell

Model A3000844 • Accent Seating

**\$250**

#### KEY FEATURES

- Upholstered in polyester fabric in clay
- Tight back and seat cushion
- Pleated arm and matching bullion fringe skirting
- Metal swivel base



### Leastow

Model A3000830 • Accent Seating

**\$220**

#### KEY FEATURES

- Upholstered in polyester velvet fabric in loden
- Barrel back, loose pillow and tight seat
- Metal swivel base



### Leastow

Model A3000831 • Accent Seating

**\$420**

#### KEY FEATURES

- Upholstered in polyester velvet fabric in loden
- Barrel back, loose pillow and tight seat
- Tapered wood legs in dark brown finish



### Leemont

Model A3000827 • Accent Seating

**\$180**

#### KEY FEATURES

- Upholstered in mist blue plush polyester fabric
- Barrel back and tight seat
- Metal swivel base

## Accent Seating



### Leemont

Model A3000828 • Accent Seating

**\$180**

#### KEY FEATURES

- Upholstered in off-white plush polyester fabric
- Barrel back and tight seat
- Metal swivel base



### Leemont

Model A3000829 • Accent Seating

**\$180**

#### KEY FEATURES

- Upholstered in juniper green plush polyester fabric
- Barrel back and tight seat
- Metal swivel base



### Lewisen

Model A3000847 • Accent Seating

**\$100**

#### KEY FEATURES

- Upholstered in polyester fabric in clay
- Light brown finished oak veneer base



### Renley

Model A3000854 • Accent Seating

**\$200**

#### KEY FEATURES

- Upholstered in ivory with teal and tan flecks polyester fabric
- Tight back and loose seat cushion
- Rolled arm
- Metal swivel glider base

## Accent Seating



### Rowenburg

Model A3000855 • Accent Seating

**\$320**

#### KEY FEATURES

- Upholstered in floral patterned polyester fabric in beige, brown, black, and gold
- Tight back and seat
- Curved wingback design
- Metal swivel glider base



### Searcy

Model A3000853 • Accent Seating

**\$240**

#### KEY FEATURES

- Upholstered in white and navy pinstriped polyester fabric
- Tight back and loose seat cushion
- Rolled arm and skirted
- Metal swivel glider base



### Tartonelle

Model A3000849 • Accent Seating

**\$200**

#### KEY FEATURES

- Upholstered in honey faux leather
- Tufted back and tight seat cushion
- English roll arm
- Wood legs in dark brown finish



### Tartonelle

Model A3000850 • Accent Seating

**\$200**

#### KEY FEATURES

- Upholstered in slate blue faux leather
- Tufted back and tight seat cushion
- English roll arm
- Wood legs in dark brown finish

## Accent Seating



### Tartonelle

Model A3000851 • Accent Seating

**\$200**

#### KEY FEATURES

- Upholstered in green faux leather
- Tufted back and tight seat cushion
- English roll arm
- Wood legs in dark brown finish



### Wardington

Model A3000843 • Accent Seating

**\$240**

#### KEY FEATURES

- Upholstered in beige, tan, white and black plaid polyester fabric
- Loose back and T-seat cushion
- English roll arm
- Wood turned legs in dark brown finish



### Wilkland

Model A3000845 • Accent Seating

**\$90**

#### KEY FEATURES

- Upholstered in shades of blue, beige, rust, ivory and brown plaid polyester fabric
- Wood turned legs in dark brown finish

## Accent Pillows



### Davinwood

Model A1001186 • Accent Pillows

**\$84**

**MACHINE WASHABLE**

#### KEY FEATURES

- Hand woven diamond design in jute and gray blue.
- Solid reverse in beige.
- Knife edge construction.
- Jute/cotton blend face with cotton reverse.



### Dawnworth

Model A1001183 • Accent Pillows

**\$140**

**MACHINE WASHABLE**

#### KEY FEATURES

- Machine woven reversible plaid design in shades of brown and cream.
- Polyester cover.
- Zipper closure.
- Feather filled.



### Varnburg

Model A1001182 • Accent Pillows

**\$120**

**MACHINE WASHABLE**

#### KEY FEATURES

- Machine woven reversible plaid design in shades of brown and cream.
- Polyester cover.
- Zipper closure.
- Feather filled.



### Vernthron

Model A1001184 • Accent Pillows

**\$76**

**MACHINE WASHABLE**

#### KEY FEATURES

- Machine woven reversible plaid design in shades of brown and cream.
- Polyester cover.
- Zipper closure.
- Feather filled.

# Throws

---



## Anawood

Model A1001189 • Throws

**\$60**

**MACHINE WASHABLE**

### KEY FEATURES

- Machine knitted solid in blue.
- Border edge construction.
- Polyester chenille.

## Occasional Tables



### Bannette

Model T605 • Occasional Tables

#### \$220 (Cocktail)

Dark charcoal finish with turned columns and bun feet gives a room traditional weight without looking like your grandmother picked it.

##### KEY FEATURES

- Casual Traditional design
- Made with hardwood solids, Oak veneer, MDF substrates, and furniture grade resin components
- Layered dark charcoal brown finish with beautifully contrasted wood grain character
- Softly rounded corners with classic turned column posts



### Bethanstone

Model A3000846 • Occasional Tables

#### \$220

##### KEY FEATURES

- Upholstered in warm brown faux leather
- Wood top in dark brown finish
- Hinged top with storage
- Casters



### Britton Bay

Model T614 • Occasional Tables

#### \$210 (Round Cocktail)

A round cocktail table with classic turned legs and real wood grain at \$210. The kind of piece that makes a traditional living room look like it was put together on purpose.

##### KEY FEATURES

- Casual traditional styling
- Made with hardwood solids, veneers, and MDF substrates
- Rich medium brown wood-tone finish for a relaxed sensibility
- Timeless round silhouette with softly shaped edges and classic turned legs



### Crendlin

Model T537 • Occasional Tables

#### \$150 (Cocktail)

Naturally aged Oak look with a white wax glaze finish that gives it depth without looking like a rustic cliché.

##### KEY FEATURES

- Casual lifestyle design
- Made with hardwood solid components, rustic Oak veneer and MDF substrates
- Light wood tone richly layered with white wax glaze for a trend-right naturally aged Oak look
- Thick edge tops and clean architectural trestle bases for balanced, substantial presence

## Occasional Tables



### Rustic Plains

Model T877 • Occasional Tables

**\$190 (Round Cocktail)**

Walnut veneer starburst top on a pedestal base with genuine uptown presence at \$190. It photographs beautifully and anchors a traditional or transitional room without apology.

#### KEY FEATURES

- Clean Traditional design with an Uptown vibe
- Made with hardwood solids, Walnut veneer and MDF substrates
- Richly layered warm brown wood tone that enhances natural Walnut veneer beauty
- Classic pedestal base with gently tapered supports for a refined, elevated look



### Weathermore

Model T531 • Occasional Tables

**\$140 (Cocktail)**

Warm Oak tops on bold black intersecting block legs — the kind of table that makes a room look like it was designed on purpose.

#### KEY FEATURES

- Casual lifestyle design with a modern craftsman vibe
- Made with rubberwood solids and Oak veneer
- High-contrast brown wood tone highlights natural Oak grain character
- Intersecting leg blocks in a blackened metallic finish with subtle pebbled texture



### Budington

Model A4000751 • Occasional Tables

**\$60**

#### KEY FEATURES

- Compact round top
- Dark warm wood tone
- Tapered pedestal base



### Caplow

Model A4000750 • Occasional Tables

**\$140**

#### KEY FEATURES

- Round accent table
- Bold organic stone-look top
- Warm wood cylindrical base

## Occasional Tables



### Denbourne

Model A4000741 • Occasional Tables

**\$120**

#### KEY FEATURES

- Accent cabinet.
- Constructed of white oak veneer, hardwood solids and engineered woods in light brown finish.
- Antique bronze finished metal door pulls.
- 4 door and 2 adjustable shelves.



### Jadner

Model A4000752 • Occasional Tables

**\$110**

#### KEY FEATURES

- Round top profile
- Decorative turned spindle base
- Warm medium wood tone



### Leighmour

Model A4000742 • Occasional Tables

**\$160**

#### KEY FEATURES

- Accent cabinet.
- Constructed of white oak veneer, hardwood solids and engineered woods in light brown finish.
- Antique bronze finished metal door pulls.
- 4 door and 2 adjustable shelves.



### Whitmund

Model A4000732 • Occasional Tables

**\$280**

#### KEY FEATURES

- Console sofa table.
- Constructed of solid pine wood, pine veneer and engineered woods in light brown finish.
- Scalloped apron and chamfered legs.
- 2 drawers and 1 shelf.

## Accent Furniture



### Actonville

Model A4000737 • Accent Furniture

**\$470**

#### KEY FEATURES

- Accent cabinet.
- Constructed of spruce and pine veneer, solid and engineered woods in light brown finish.
- Black sintered stone top.
- Grid pattern doors.



### Annswick

Model A4000743 • Accent Furniture

**\$460**

#### KEY FEATURES

- Constructed of white oak veneer, hardwood solids and engineered woods in light brown finish.
- Antique bronze finished metal door pulls.
- 4 door and 2 adjustable shelves.
- Openings in back for electronics.



### Clayburns

Model A4000744 • Accent Furniture

**\$400**

#### KEY FEATURES

- Bar cabinet.
- Constructed of oak veneer, hardwood solids and engineered woods in light brown finish.
- Antique gray textured metal door pulls.
- Veneer inlay patterned doors.



### Darlock

Model A4000738 • Accent Furniture

**\$360**

#### KEY FEATURES

- Accent cabinet.
- Constructed of spruce and pine veneer, solid and engineered woods in light brown finish.
- Black sintered stone top.
- Grid pattern doors.

## Accent Furniture



### Dukestone

Model A4000745 • Accent Furniture

**\$500**

#### KEY FEATURES

- Bar cabinet.
- Constructed of oak veneer, hardwood solids and engineered woods in light brown finish.
- Antique gray textured metal door pulls.
- Veneer inlay patterned doors.



### Finnworth

Model A4000734 • Accent Furniture

**\$330**

#### KEY FEATURES

- Long console profile
- Dark teal finish
- Turned spindle uprights
- Lower drawers for storage



### Finnworth

Model A4000735 • Accent Furniture

**\$320**

#### KEY FEATURES

- Tall vertical etagere
- Four open display shelves
- Turned spindle uprights
- Lower drawer



### Walsgrove

Model A4000739 • Accent Furniture

**\$320**

#### KEY FEATURES

- Accent cabinet.
- Constructed of spruce and pine veneer, solid and engineered woods in light brown finish.
- Black sintered stone top.
- Grid pattern doors.

# Rugs



## R40880

### Anzelworth

Model R40880

**\$100**

#### KEY FEATURES

- Machine woven high-low, abstract design in beige, ivory, shades of gray and charcoal
- 8.5mm pile
- Polyester
- Spot clean only



## R40869

### Braymen

Model R40869

**\$100**

#### KEY FEATURES

- Machine woven high-low, abstract floral design in blue, green, brown, gray, gold and ivory
- 25mm pile
- Polypropylene/heat set polyester shrink yarn blend, backed with jute
- Spot clean only



## R40867

### Cartlett

Model R40867

**\$85**

#### KEY FEATURES

- Machine woven, geometric design in white, taupe and black
- 25mm pile
- Polypropylene/heat set polyester shrink yarn blend, backed with jute
- Spot clean only



## R40868

### Claygrove

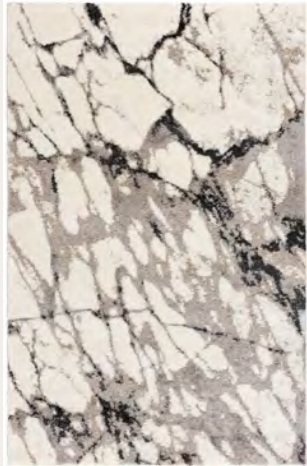
Model R40868

**\$100**

#### KEY FEATURES

- Machine woven high-low, abstract design in brown and taupe
- 25mm pile
- Polypropylene/heat set polyester shrink yarn blend, backed with jute
- Spot clean only

# Rugs



## R40872

**Daviman**  
Model R40872

**\$85**

### KEY FEATURES

- Machine woven, abstract design in white, black and gray
- 25mm pile
- Polypropylene/heat set polyester shrink yarn blend, backed with jute
- Spot clean only



## R40863

**Devney**  
Model R40863

**\$70**

### KEY FEATURES

- Machine woven, floral design in ivory, brown, gray and rust
- 11mm pile
- Heat set polypropylene, backed with jute
- Spot clean only



## R40858

**Dorwick**  
Model R40858

**\$50**

**MACHINE WASHABLE**

### KEY FEATURES

- Machine tufted cut and loop, geometric design in gray and ivory
- 18mm pile
- Polypropylene, backed with rubber



## R40871

**Gilberton**  
Model R40871

**\$100**

### KEY FEATURES

- Machine woven high-low, abstract design in charcoal, gray and white
- 10mm pile
- Heat set polypropylene/polyester shrink yarn blend, backed with jute
- Spot clean only

# Rugs



## R40870

### Jaiminson

Model R40870

**\$75**

#### KEY FEATURES

- Machine woven high-low, geometric design in blue, gray and white
- 8mm pile
- Heat set polypropylene/polyester shrink yarn blend, backed with jute
- Spot clean only



## R40877

### Jaspen

Model R40877

**\$85**

#### KEY FEATURES

- Machine woven, abstract design in shades of ivory, beige and brown
- 14mm pile
- Polyester/polypropylene blend
- Spot clean only



## R40859

### Jerrlow

Model R40859

**\$50**

**MACHINE WASHABLE**

#### KEY FEATURES

- Machine tufted cut and loop, stripe design in beige, ivory, gray and brown
- 18mm pile
- Polypropylene, backed with rubber



## R40875

### Jessmen

Model R40875

**\$100**

#### KEY FEATURES

- Machine woven high-low, floral design in beige, blue, gray and ivory
- 8.5mm pile
- Polyester
- Spot clean only

# Rugs



## R40878

### Lemthins

Model R40878

**\$55**

#### KEY FEATURES

- Machine woven cut pile, geometric design in brown and tan
- 11mm pile
- Polypropylene
- Spot clean only



## R40864

### Loomville

Model R40864

**\$100**

#### KEY FEATURES

- Machine woven high-low, abstract stripe design in gray, taupe, beige and ivory
- 10mm pile
- Heat set polypropylene/polyester shrink yarn blend, backed with jute
- Spot clean only



## R40860

### Reesean

Model R40860

**\$50**

**MACHINE WASHABLE**

#### KEY FEATURES

- Machine tufted cut and loop, geometric design in black and tan
- 18mm pile
- Polypropylene, backed with rubber



## R40883

### Valenmore

Model R40883

**\$100**

#### KEY FEATURES

- Machine woven cut pile, floral design in cream, brown, blue, clay and gray
- 8.5mm pile
- Polyester
- Spot clean only

# Rugs



## R40884

**Wallerman**

Model R40884

**\$100**

### KEY FEATURES

- Machine woven jacquard, botanical design in jute, black and ivory
- No pile
- Polyester/jute blend
- Spot clean only



## R40862

**Webbridge**

Model R40862

**\$75**

### KEY FEATURES

- Machine woven, floral design in ivory, gray, tan, blue and rust
- 11mm pile
- Heat set polypropylene/polyester shrink yarn blend, backed with jute
- Spot clean only



## R40876

**Wellsmore**

Model R40876

**\$100**

### KEY FEATURES

- Machine woven cut pile, floral design in shades of clay and beige
- 8.5mm pile
- Polyester
- Spot clean only



## R40865

**Wessonland**

Model R40865

**\$100**

### KEY FEATURES

- Machine woven high-low, abstract stripe design in ivory, brown and gray
- 25mm pile
- Polypropylene/heat set polyester shrink yarn blend, backed with jute
- Spot clean only

# Rugs



## **R40874**

### **Wilburnton**

Model R40874

**\$100**

#### KEY FEATURES

- Machine woven high-low, floral design in ivory, gray, blue and clay
- 8.5mm pile
- Polyester
- Spot clean only

# Lamps



## Abbriel

Model L430974 • Lamps

**\$70**

### KEY FEATURES

- Light green glass with silver finished distressing and gold finished metal table lamp
- Modified drum hardback shade
- 3-way switch
- (1) E26 socket, type A bulb recommended, 150 watts max



## Arcmond

Model L208544 • Lamps

**\$70**

### KEY FEATURES

- Brown faux leather and gold finished metal table lamp
- Faux leather and metal drum shade
- (1) USB-C charging port
- On-off pull chain switch



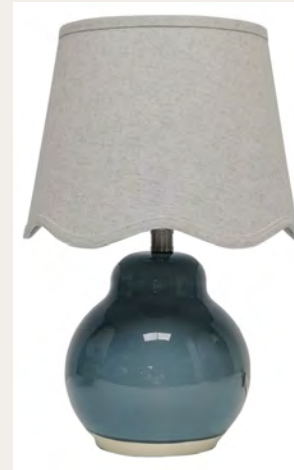
## Bronnerdale

Model L236134 • Lamps

**\$30**

### KEY FEATURES

- Faux travertine table lamp
- Empire hardback shade
- On-off switch
- (1) E26 socket, type A bulb recommended, 60 watts max



## Byronburg

Model L180224 • Lamps

**\$45**

### KEY FEATURES

- Blue glazed and unfinished ceramic table lamp
- Scalloped hardback shade
- On-off switch
- (1) E26 socket, type A bulb recommended, 60 watts max

# Lamps



## Callbrook

Model L243714 • Lamps

**\$65**

### KEY FEATURES

- Faux travertine table lamp
- Modified drum hardback shade
- 3-way switch
- (1) E26 socket, type A bulb recommended, 100 watts max



## Capwiche

Model L100994 • Lamps

**\$55**

### KEY FEATURES

- Cream sanded finish and white speckled glazed ceramic table lamp
- Drum hardback shade
- 3-way switch
- (1) E26 socket, type A bulb recommended, 150 watts max



## Clairwell

Model L734421 • Lamps

**\$70**

### KEY FEATURES

- Black faux leather, black and gold finished metal floor lamp
- Metal shade
- On-off switch
- (1) E26 socket, type A bulb recommended, 60 watts max



## Clairwell

Model L734422 • Lamps

**\$50**

### KEY FEATURES

- Black faux leather, black and gold finished metal desk lamp
- Metal shade
- On-off switch
- (1) E26 socket, type A bulb recommended, 40 watts max

# Lamps



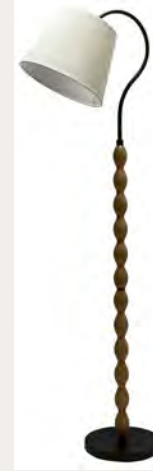
## Clayard

Model L100964 • Lamps

**\$50**

### KEY FEATURES

- Gray-blue glazed ceramic table lamp
- Drum hardback shade
- 3-way switch
- (1) E26 socket, type A bulb recommended, 150 watts max



## Corinwell

Model L329131 • Lamps

**\$60**

### KEY FEATURES

- Light brown turned wood and black finished metal floor lamp
- Modified drum shade
- On-off foot switch
- (1) E26 socket, type A bulb recommended, 60 watts max



## Dellridge

Model L400001 • Lamps

**\$140**

### KEY FEATURES

- Natural linen/cotton blend fabric wrapped metal and wood floor lamp
- Empire hardback shade
- On-off foot switch
- (1) E26 socket, type A bulb recommended, 150 watts max



## Dellridge

Model L400004 • Lamps

**\$70**

### KEY FEATURES

- Natural linen/cotton blend fabric wrapped metal and wood table lamp
- Empire hardback shade
- On-off inline switch
- (1) E26 socket, type A bulb recommended, 100 watts max

# Lamps



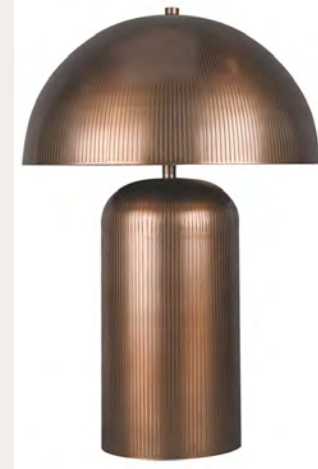
## Desmont

Model L428974 • Lamps

**\$90**

### KEY FEATURES

- White, beige and gray marbled table lamp
- Off-white linen fabric modified drum hardback shade with white cotton fabric liner
- 3-way switch
- (1) E26 brass socket, type A bulb recommended, 150 watts max



## Dorriham

Model L208554 • Lamps

**\$90**

### KEY FEATURES

- Light bronze finished etched metal table lamp
- Metal dome shade
- On-off inline switch
- (2) E26 brass sockets, type A bulb recommended, 40 watts max



## Jendale

Model L208524 • Lamps

**\$60**

### KEY FEATURES

- Bronze finished triangular metal table lamp
- Empire hardback shade
- 3-way switch
- (1) E26 socket, type A bulb recommended, 150 watts max



## Junrow

Model L430964 • Lamps

**\$105**

### KEY FEATURES

- Antique bronze finished metal and clear glass table lamp
- Off-white cotton fabric hardback shade with white cotton fabric liner
- 3-way switch
- (1) E26 brass socket, type A bulb recommended, 150 watts max

# Lamps



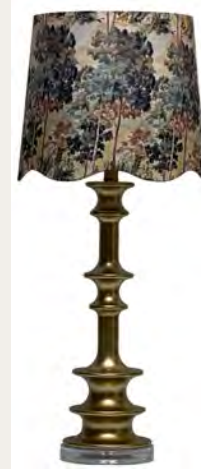
## Kaidins

Model L100984 • Lamps

**\$55**

### KEY FEATURES

- White and blue reactive glazed ceramic table lamp
- Modified drum hardback shade
- 3-way switch
- (1) E26 socket, type A bulb recommended, 150 watts max



## L236144

Model L236144 • Lamps

**\$50**

### KEY FEATURES

- Antique gold finished poly resin and acrylic table lamp
- Scalloped hardback shade
- 3-way switch
- (1) E26 socket, type A bulb recommended, 150 watts max



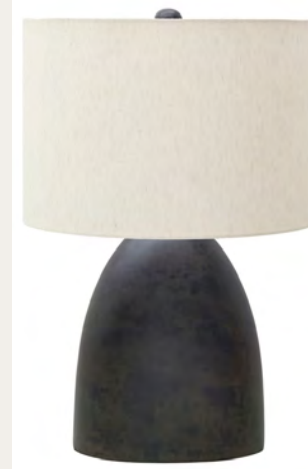
## Lemland

Model L208534 • Lamps

**\$70**

### KEY FEATURES

- Black faux leather, black and gold finished metal table lamp
- Metal dome shade
- On-off inline switch
- (2) E26 sockets, type A bulb recommended, 40 watts max



## Sethmore

Model L101024 • Lamps

**\$50**

### KEY FEATURES

- Distressed black finished terra cotta table lamp
- Oval drum hardback shade
- 3-way switch
- (1) E26 socket, type A bulb recommended, 100 watts max

# Lamps



## Wardthron

Model L236124 • Lamps

**\$55**

### KEY FEATURES

- Faux travertine and gold finished metal table lamp
- Modified drum hardback shade
- 3-way switch
- (1) E26 socket, type A bulb recommended, 150 watts max



## Webbington

Model L100944 • Lamps

**\$55**

### KEY FEATURES

- Light teal crackle glazed ceramic and gold finished metal table lamp
- Pleated softback modified drum shade
- 3-way switch
- (1) E26 socket, type A bulb recommended, 150 watts max



## Weswick

Model L100934 • Lamps

**\$60**

### KEY FEATURES

- Off white crackle glazed ceramic and gold finished metal table lamp
- Modified drum hardback shade
- 3-way switch
- (1) E26 socket, type A bulb recommended, 150 watts max

## Table Top Accents



### Brickmoore

Model A2000919 • Table Top Accents

**\$28**

#### KEY FEATURES

- Sculpture
- Matte white poly resin
- Oval design



### Brockford

Model A2000949 • Table Top Accents

**\$26**

#### KEY FEATURES

- Vase
- Cream, black and brown terracotta
- Not water tight
- Due to the hand crafted nature of this product, some variations may occur



### Browman

Model A2000921 • Table Top Accents

**\$35**

#### KEY FEATURES

- Bowl
- Black finished poly resin
- Decorative use only
- Not water tight



### Bryons

Model A2000915 • Table Top Accents

**\$15**

#### KEY FEATURES

- Sculpture
- Faux travertine
- Geometric design

## Table Top Accents



### Bryons

Model A2000916 • Table Top Accents

**\$15**

#### KEY FEATURES

- Vase
- Faux travertine
- Not water tight



### Bryons

Model A2000917 • Table Top Accents

**\$18**

#### KEY FEATURES

- Vase
- Faux travertine
- Not water tight



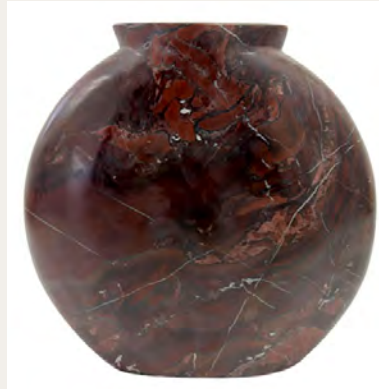
### Collridge

Model A2000941 • Table Top Accents

**\$36**

#### KEY FEATURES

- Sculpture
- Cast aluminum in antique gold finish and black marble
- Botanical design
- Due to the use of natural materials, some variations may occur



### Dashner

Model A2000932 • Table Top Accents

**\$55**

#### KEY FEATURES

- Vase
- Red marble
- Not water tight
- Due to the use of natural materials, some variations may occur

## Table Top Accents



### Ferminton

Model A2000944 • Table Top Accents

**\$55**

#### KEY FEATURES

- Sculpture
- Solid wood in light brown finish and black finished metal
- Due to the use of natural materials, some variations may occur



### Ferryndale

Model A2000938 • Table Top Accents

**\$50**

#### KEY FEATURES

- Vase
- Gold finished cast aluminum
- Geometric pattern
- Not water tight



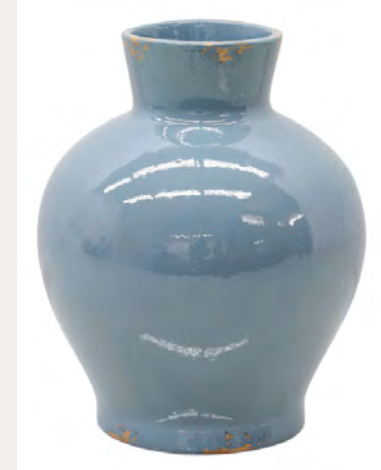
### Ferryndale

Model A2000939 • Table Top Accents

**\$55**

#### KEY FEATURES

- Vase
- Gold finished cast aluminum
- Geometric pattern
- Not water tight



### Gilburgh

Model A2000958 • Table Top Accents

**\$28**

#### KEY FEATURES

- Vase
- Antique blue finish terracotta
- Not water tight
- Due to the hand crafted nature of this product, some variations may occur

## Table Top Accents



### Giliburgh

Model A2000959 • Table Top Accents

**\$36**

#### KEY FEATURES

- Vase
- Antique blue finish terracotta
- Not water tight
- Due to the hand crafted nature of this product, some variations may occur



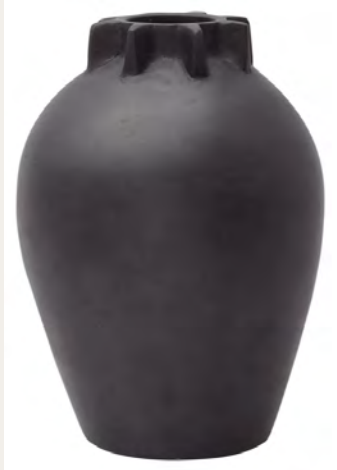
### Hurport

Model A2000937 • Table Top Accents

**\$20**

#### KEY FEATURES

- Sculpture
- Tan, red and gray sandstone marble
- Due to the use of natural materials, some variations may occur



### Kaslett

Model A2000950 • Table Top Accents

**\$27**

#### KEY FEATURES

- Vase
- Antique black terracotta
- Not water tight
- Due to the hand crafted nature of this product, some variations may occur



### Laddbrook

Model A2000933 • Table Top Accents

**\$20**

#### KEY FEATURES

- Sculpture
- Green and beige marble
- Chain design
- Due to the use of natural materials, some variations may occur

## Table Top Accents



### Laddbrook

Model A2000934 • Table Top Accents

**\$20**

#### KEY FEATURES

- Sculpture
- Tan marble
- Chain design
- Due to the use of natural materials, some variations may occur



### Leithwood

Model A2000920 • Table Top Accents

**\$28**

#### KEY FEATURES

- Bowl
- Matte beige finished poly resin
- Decorative use only
- Not water tight



### Samwell

Model A2000926 • Table Top Accents

**\$45**

#### KEY FEATURES

- Set of 2 boxes
- Brown faux leather cover with black velvet liner



### Samwell

Model A2000927 • Table Top Accents

**\$45**

#### KEY FEATURES

- Set of 2 boxes
- Black faux leather cover with black velvet liner

## Table Top Accents



### Vercott

Model A2000956 • Table Top Accents

**\$25**

#### KEY FEATURES

- Vase
- Antique white finish terracotta
- Not water tight
- Due to the hand crafted nature of this product, some variations may occur



### Vercott

Model A2000957 • Table Top Accents

**\$32**

#### KEY FEATURES

- Vase
- Antique white finish terracotta
- Not water tight
- Due to the hand crafted nature of this product, some variations may occur



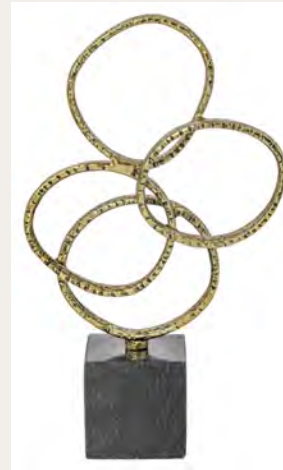
### Waynemont

Model A2000918 • Table Top Accents

**\$30**

#### KEY FEATURES

- Sculpture
- Matte white poly resin
- Botanical design



### Wellcott

Model A2000940 • Table Top Accents

**\$50**

#### KEY FEATURES

- Sculpture
- Cast aluminum in antique gold finish and black marble
- Due to the use of natural materials, some variations may occur

## Table Top Accents



### Wendon

Model A2000953 • Table Top Accents

**\$45**

#### KEY FEATURES

- Sculpture
- Light beige marble with black finished metal stand
- Due to the use of natural materials, some variations may occur



### Wittbell

Model A2000960 • Table Top Accents

**\$35**

#### KEY FEATURES

- Bowl
- Antique sage finish terracotta
- Decorative use only
- Not water tight

## Wall Art



### A8000532

Model A8000532 • Wall Art

**\$150**

#### KEY FEATURES

- Abstract design in shades of black and brown
- Gallery wrapped canvas with black finished wood frame
- Hand painted
- D-ring bracket for hanging



### A8000538

Model A8000538 • Wall Art

**\$80**

#### KEY FEATURES

- Landscape in shades of gray
- Print with light brown polystyrene frame
- Glass front with beveled mat
- Keyhole bracket for hanging



### A8000539

Model A8000539 • Wall Art

**\$60**

#### KEY FEATURES

- Architectural sketch in shades of black and white
- Print with taupe polystyrene frame
- Glass front with beveled mat
- D-ring bracket for hanging



### A8000548

Model A8000548 • Wall Art

**\$85**

#### KEY FEATURES

- Set of two
- Architectural sketch in shades of black and beige
- Print with antique gold finished wood frame
- Acrylic front with beveled double mat

## Wall Art



### A8000549

Model A8000549 • Wall Art

**\$80**

#### KEY FEATURES

- Set of two
- Vintage cameras in black, white, brown and gray
- Print with black finished wood frame
- Acrylic front with beveled double mat



### Brettwarth

Model A8000547 • Wall Art

**\$80**

#### KEY FEATURES

- Distressed medallion design in shades of red, orange, blue and tan
- Printed gallery wrapped linen canvas with brown finished wood frame
- D-ring bracket for hanging
- Hangs four ways



### Chadlow

Model A8000537 • Wall Art

**\$70**

#### KEY FEATURES

- Landscape in shades of brown, clay and black
- Print with black finished wood frame
- Acrylic front with beveled mat
- D-ring bracket for hanging



### Claydale

Model A8000552 • Wall Art

**\$100**

#### KEY FEATURES

- Square wall art
- Blue abstract

## Wall Art



### Fenngrove

Model A8000536 • Wall Art

**\$85**

#### KEY FEATURES

- Landscape in shades of taupe
- Print with dark brown polystyrene frame
- Glass front with beveled mat
- Keyhole bracket for hanging



### Grantmour

Model A8000535 • Wall Art

**\$80**

#### KEY FEATURES

- Landscape in shades of brown
- Print with dark brown finished wood frame
- Acrylic front
- D-ring bracket for hanging



### Huddwick

Model A8000540 • Wall Art

**\$55**

#### KEY FEATURES

- Cityscape sketch in black and white
- Print with antique gold polystyrene frame
- Glass front with beveled mat
- D-ring bracket for hanging



### Huddwick

Model A8000544 • Wall Art

**\$100**

#### KEY FEATURES

- Abstract landscape design in shades of amber, beige, blue, gray, green and white
- Gallery wrapped linen canvas with whitewashed finished wood frame
- Hand painted
- Sawtooth bracket for hanging

## Wall Art



### Laryton

Model A8000531 • Wall Art

**\$130**

#### KEY FEATURES

- Abstract design in shades of white, beige, gray, rust, brown and black
- Raised canvas with light brown polystyrene frame
- Linen mat
- Hand painted embellishment



### Stormish

Model A8000534 • Wall Art

**\$100**

#### KEY FEATURES

- Set of two
- Landscape design in shades of beige and brown
- Printed gallery wrapped linen canvas with brown finished wood frame
- D-ring bracket for hanging